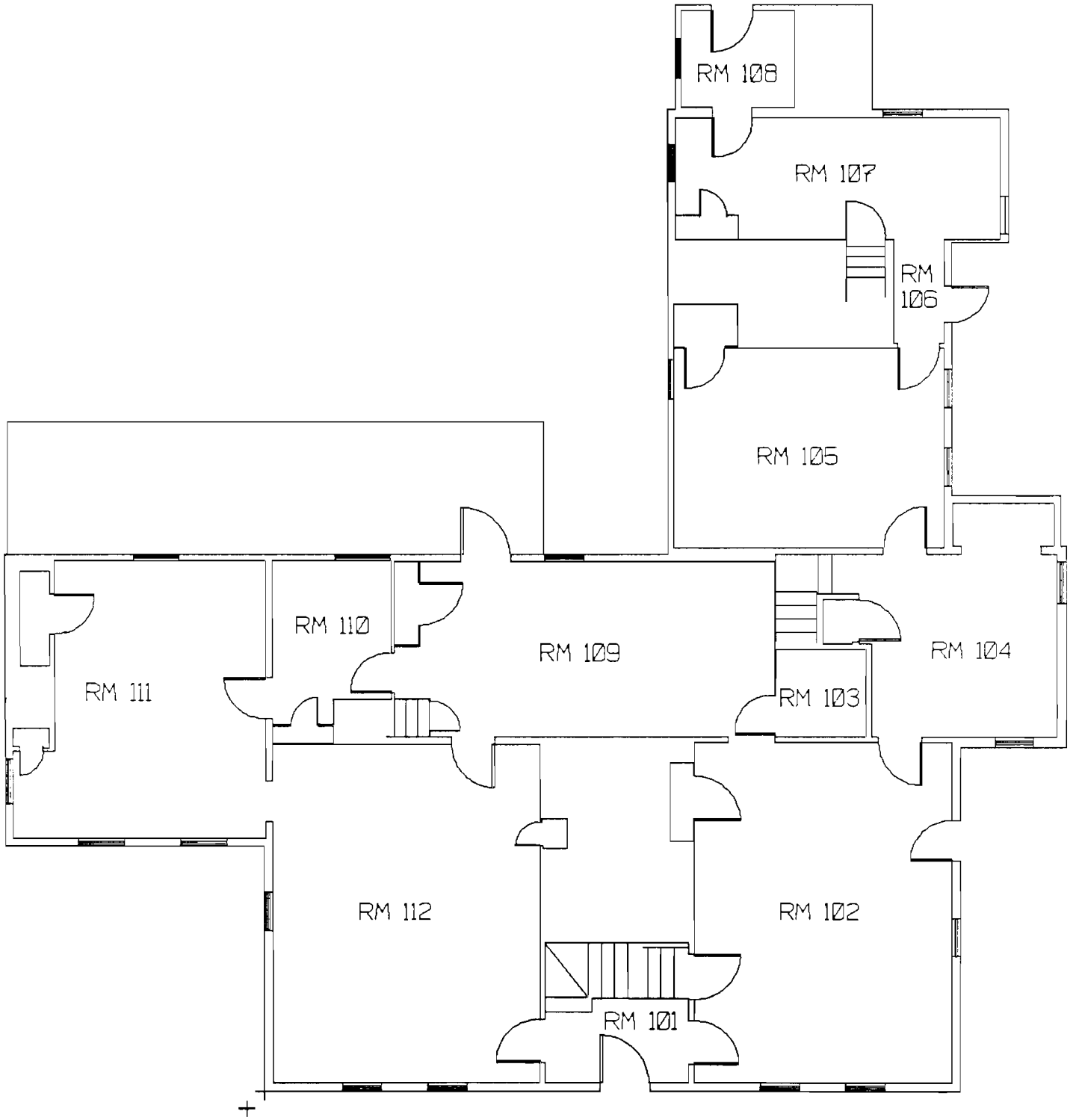
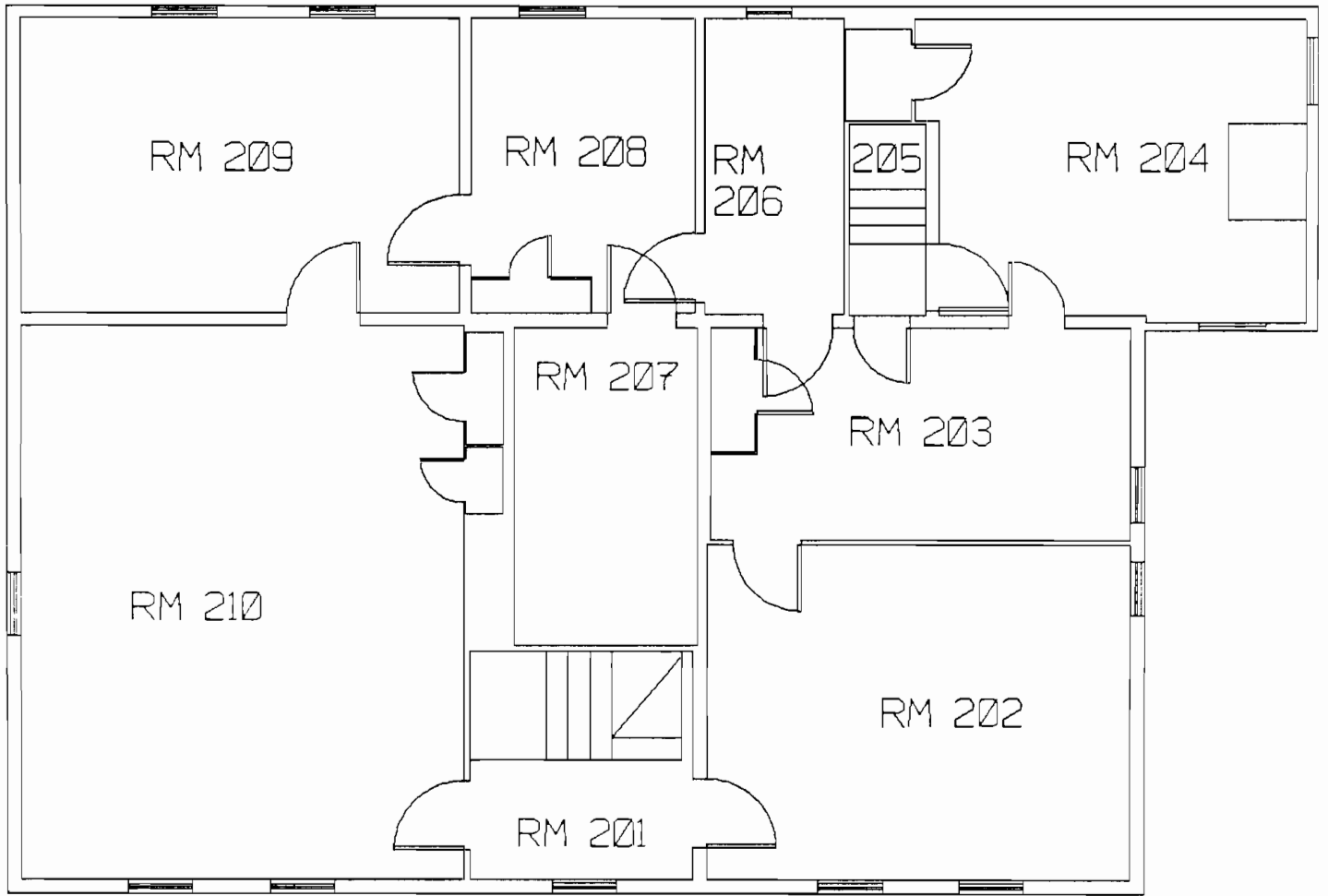

PART III: THE ARCHEOLOGY OF THE INTERIOR

The rooms in this section are identified by numbers, keyed to the floorplans on the following pages. The walls within each room are labeled by direction (N•S•E•W).

The first two pages of each room section are a complete set of interior elevations (a "cloverleaf"), followed by sub-sections describing archeological excavations into various walls. The arrangement is similar to that of the previous section, except for the inclusion of elevation drawings.



PARSONS HOUSE
First Floor



PARSONS HOUSE
Second Floor